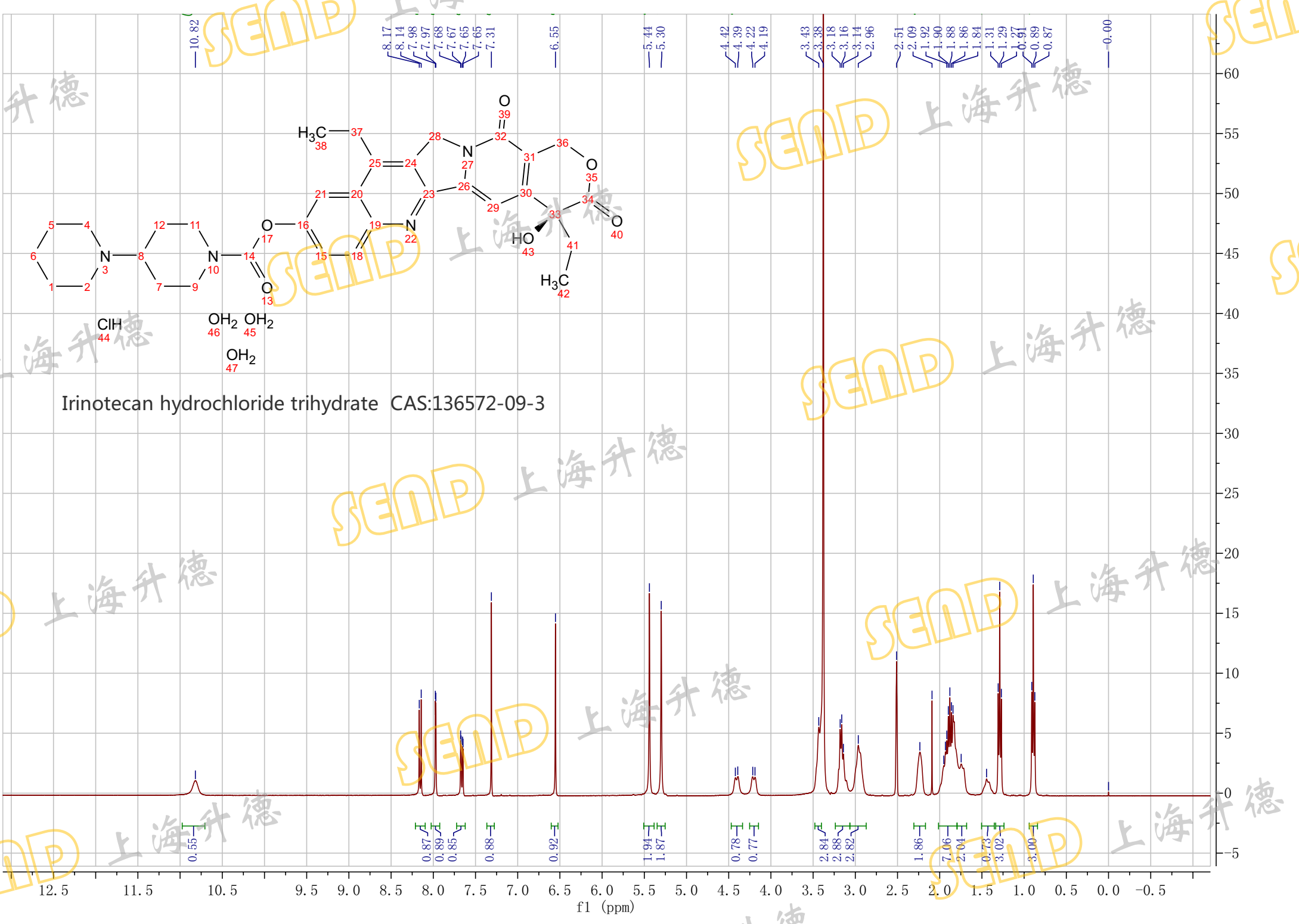


Irinotecan hydrochloride trihydrate CAS:136572-09-3



Chemical shifts (ppm): 10.82, 8.17, 8.14, 7.98, 7.97, 7.68, 7.67, 7.65, 7.65, 7.31, 6.55, 5.44, 5.30, 4.42, 4.39, 4.22, 4.19, 3.43, 3.38, 3.18, 3.16, 3.14, 2.96, 2.51, 2.09, 1.92, 1.90, 1.88, 1.86, 1.84, 1.31, 1.29, 0.91, 0.89, 0.87, -0.00

Integration values: 0.55, 0.87, 0.89, 0.85, 0.88, 0.92, 1.94, 1.87, 0.78, 0.77, 2.84, 2.88, 2.82, 1.86, 7.06, 2.04, 0.73, 3.02, 3.00